

TECHNICAL SPECIFICATIONS

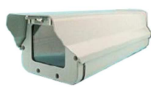
CCD700DNW-AD (MMC: 80010419)

Video Specifications	
Image Sensor	Sony 1/3" 960H Super HAD CCD II
Scanning System	2:1 Interface
Scanning Frequency (H)	15625 Hz
Scanning Frequency (V)	50.00Hz
Sync. System	Internal
Signal System	625 Lines
Total Effective Pixels	976(H) x 582(V) 576 pixels
S/N Ratio	More than 52 dB (AGC OFF)
Resolution	700 TVL
Video Output Level	1.0 Vp-p (75 Ohms, Composite)
Min. Illumination	0.1Lux@F1.2 (Color mode), 0.01Lux@F1.2 (B/W mode)
Lens Description (Optional)	
Lens Iris	DC Lens Iris only
Operational Functions	
Shutter Fixed	1/50, 1/120, 1/250, 1/500, 1/1000, 1/2000, 1/4000, 1/10000
HLC/BLC	Off / On
AGC	6, 12, 18, 24, 30, 36, 42, 44.8
White Balance	ATW / ANTI CR / PUSH / MANUAL / USER1 / USER2
Day/Night	AUTO / COLOR
WDR	Full / Normal / Light
Motion Detection	On / Off (4 Programmable Zones)
Privacy Mask	On / Off (15 Programmable Zones)
Image Setup	Mirror / Contrast / Sharpness / Defog
Language	Selectable in English, Japanese and Chinese
Functions Access	OSD Menu
Mechanical Features	
I/O Connector	Video output: Molded BNC Connector and 12 V DC Input: DC Socket
Dimensions	130mm(L) x 70mm(W) x 73mm(H)
Weight	Approx. 260g
Environmental Operability	
Operating Temperature	-10°C ~ 55°C
Electrical Details	
Power Supply	DC 12 +/- 0.5V
Max. Power Consumption	130mA / 12VDC
Package Includes	CCD700DNW-AD (*Lens-Optional), Operating Manual and Mounting Screws

Optional Accessories



Outdoor Housing (IP66)



Outdoor Back Open Camera Housing



Camera Bracket



Outdoor Housing Bracket



2.8mm~8mm



5mm~50mm

CCD700DNW-AD Professional Box Camera



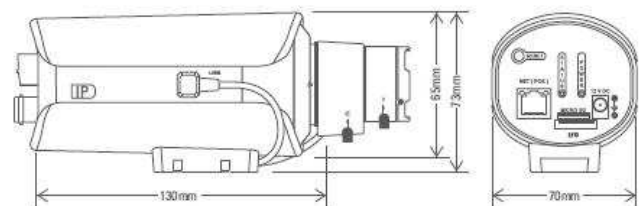
Key Features

- Sony 1/3" 960H Super HAD CCD II
- 700 TVL Resolution
- Lens: Optional, C/CS Mount, Auto-Iris with ICR
- True Day / Night with ICR on Sensor
- Ultra Clear Image Performance
- Professional Setup with OSD Menu
- DIS (Digital Image Stabilizer) function
- Noise Free Image at Low Light
- Includes features Like Back Light Compensation (BLC) / HLC / White Balance / Dynamic Noise Rejection (DNR) / Digital Wide Dynamic Range (DWDR) / Auto Gain Control (AGC) / MIRROR / Motion Detection / Privacy Masking etc.

Dimensions

DIMENSIONS

Unit: mm



The above mentioned technical drawings are for reference only.
All dimensions are in millimeters and approximate.