

Technology-Surveillance Systems

# VFD650DNW-AD

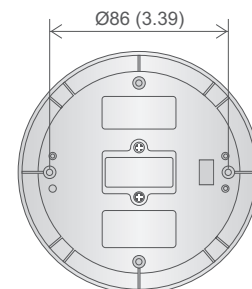
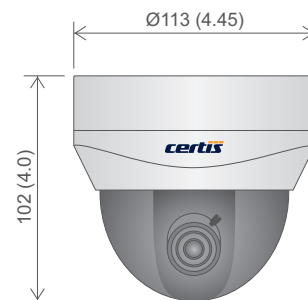
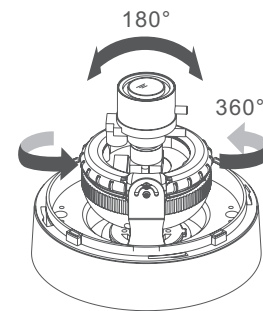
WDR 3-Axis  
Vari-Focal Dome Camera

## Features

- SONY 1/3" Super HAD CCD II™
- 650 TVL Resolution with 12-bit process DSP
- 3.0~12 mm (F1.2) Vari-focal Auto-Iris Japanese Lens
- Super Sensitive Low Lux Image Capture, Low up to 0.00001 Lux (Sens-up, 512X)
- Ultra Clear Image Performance
- Noise Free Image at Low Light
- Professional Setup with Built-in OSD Menu
- Three Axis Gimbal for Freely Lens Angle Setup
- Selectable WDR, BLC and ECLPS 16 Windows
- Four Types of White Balance (ATW, COL-ROLL, PUSH and MANUAL)
- Selectable Day(Color) / Night(B/W)
- Selectable Video Motion Detection (Max.8 Areas)
- Ultra Noise Rejection (For Saving HDD Space During Motion Recording)
- Digital Slow Exposure 29 Types, A.FLK and Auto
- Selectable Privacy Mask Zones (Max.8 Areas)
- Selectable Image Setup (D-ZOOM with PAN and TILT Scan, V-FLIP, MIRROR, ROTATE Scan and FREEZE)
- Digital Image Stabilizer Function For Vibration Area Installations Like Airport
- Camera Name Setting (15 Characters)
- Five Types of Languages Setting (English, Korean, Russian, French and Spanish)
- At Indoor High Light Conditions like Jewelry Shops, Shopping Malls, Designer's Shops, etc., Easy to Adjust with OSD Setup
- At Different Light Conditions like Fluorescent Light, Mercury Light, Metal Halide Light or Natural Light, Easy to Achieve True Color Through Adjusting White Balance with OSD. No Need Expensive Camera
- Wide In-put Voltage Range (DC 9.0V to DC 12V)
- Lowest Power Consumption (150 mA/DC 12V)
- Lowest Heat on Board for Long Life of Camera
- Compact and Light Weight
- Optically Corrected Top Dome Cover

## Optional Features

- RS-485 Selectable Communication
- Motion Detection NO/NC Output
- Dual 12VDC/24VAC Input
- UTP (CAT-5) Active Video Output



Unit: mm (inches)  
The above mentioned technical drawings are for reference only.

## Wide Dynamic Range



Wide Dynamic Range

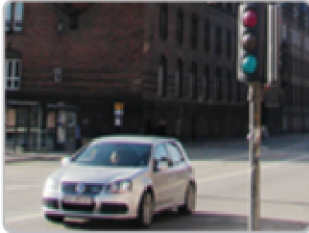


Conventional CCD Camera  
with BLC ON

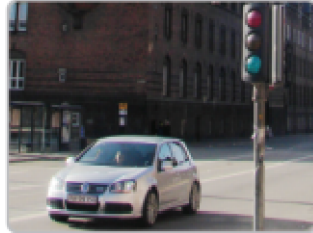


Conventional CCD Camera  
with BLC OFF

## ULTRA HIGH RESOLUTION



Conventional Camera



650TVL Camera

## ULTRA NOISE REJECTION



Conventional Camera



UNR Camera

## HI-ILLUMINATION MASK

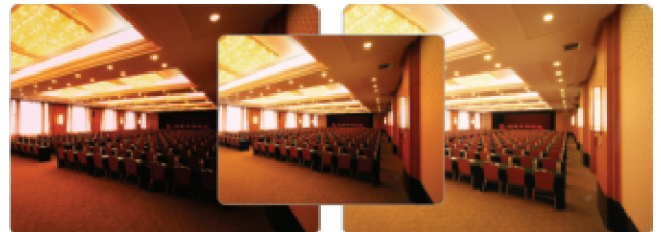


Without Hi-Illumination Mask



With Hi-Illumination Mask

## DIGITAL SLOW EXPOSURE



SENS-UP GAIN AND DIGITAL SLOW EXPOSURE

## Technical Specifications

### MODEL VFD650DNW-AD (NTSC/PAL)

Image Sensor	SONY 1/3" Super HAD CCD II™	3D-DNR	ON / OFF (Level Adjustable)
Lens Type	3.0~12 mm(F1.2) Vari-focal Auto-Iris Japanese Lens	MOTION DET	ON / OFF (8 Programmable Zones)
Scanning System	2:1 Interlace	Privacy Mask	ON / OFF (8 Programmable Zones)
Scanning Frequency (H)	15734 Hz/15625 Hz	Image Setup	OFF / V-FLIP / MIRROR / ROTATE / FREEZE
Scanning Frequency (V)	59.94Hz/50.00Hz	Language	English, Korean, Russian, French and Spanish
Sync. System	Internal	Lens Iris	DC Lens Iris
Signal System	525 Lines/625 Lines	Reset	Factory Reset
Total Effective Pixels	440K/470K	Pro. Functions Access	Five Tact Switch OSD Control
S/N Ratio	More than 52 dB (AGC OFF)	Power Supply	DC 12V ± 1V
Resolution	650 TVL (Color) / 700 TVL (B/W)	Current Consumption	150mA / 12V DC
Video Output Level	1.0 Vp-p (75 Ohms, Composite)	I / O Connector	Video output : Molded BNC Connector and 12V DC Input : DC Socket
Min. Illumination	0.00001 Lux (Sens-Up, On)	Operating Temp	-10 °C ~ +50 °C (14 °F ~ 122 °F)
Shutter Fixed	1/160 ~ 1/90,000 Sec. / A.FLK / AUTO	Dimensions	113.0 mm (Base Diameter) X 102.0 mm (H)
WDR / BLC / ECLPS	OFF / WDR / BLC / ECLPS	Weight	Approx. 340g
AGC	OFF / LOW / MIDDLE / HIGH		
White Balance	ATW / COL-ROLL / PUSH / MANUAL		
Day / Night	AUTO / DAY / NIGHT / EXT		

\* "Super HAD CCD II" is a trademark of Sony Corporation.

(Certis may, at any time and without notice, make changes or improvements to the products and services offered and/or cease producing or commercialising them.)  
The Certis trademark is a property of Certis Technology International Pte Ltd.

Authorised Dealer / Representative.

**certis**  
Securing Your World